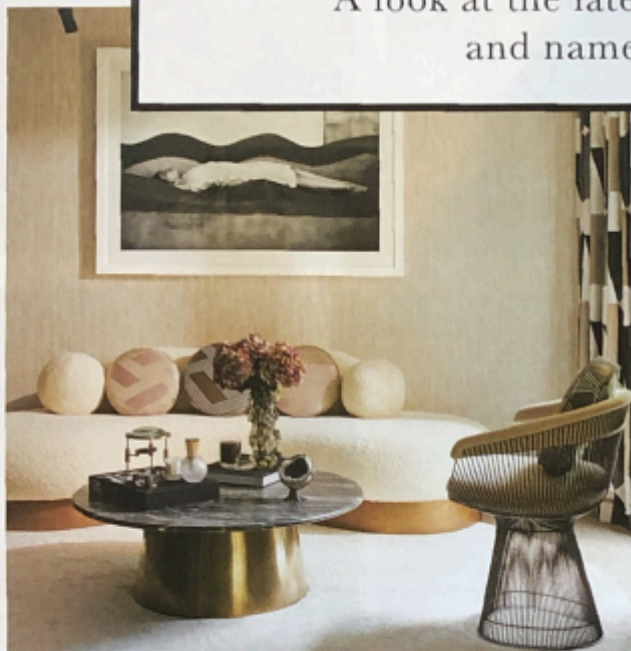


CONDÉ NAST
BRITAIN | PROPERTY

NOTEBOOK

A look at the latest property news,
and names to know



THEATRICAL FLAIR IN THE HEART OF THE WEST END

With a vibrant mix of old and new, Covent Garden is one of London's most famous neighbourhoods, home to dozens of theatres, and hundreds of cafes and restaurants. Its busy nightlife and central location make it a desirable address for urbanites, and a new scheme by the property developers Londonewcastle sees a historic Victorian building transformed into 40 brand-new apartments. The interiors combine contemporary design with a nod to Covent Garden's rich theatrical heritage – the lobby makes a bold, playful statement, with its sumptuous jewel-toned fabrics, textured walls and shimmering

chain-mail curtains. The apartments, meanwhile, are fitted out with the latest technology, with touchscreen home automation for heating and lighting, and integrated sound systems. Most of the properties have their own outdoor space – something that's a rare find in the West End. The terraces were created by award-winning company Andy Sturgeon Garden Design, which has cleverly created private and tranquil green spots for residents to enjoy. A perfect pied-à-terre in the bustling heart of the capital.

www.londonewcastle.com



ESCAPE TO THE SEA

Spread across 90 acres of North Yorkshire's wild and picturesque coastline, Raithwaite Village is a new development of holiday homes close to Sandsend Beach and the seaside town of Whitby. It has been built with the environment in mind, with sustainably sourced materials, green roofs, and the use of renewable energy. 'Our vision is to create properties in which to relax, surrounded by nature,' says Toby Hunter of Maritime Capital, the company behind the project. 'Our designs are made to last, so that properties can be passed down through the generations.' From £350,000.

www.raithwaitevillage.com

AN EXPERT EYE TO HELP WITH YOUR LETTING

Letting out a residential property can be a minefield – especially since there are now over 100 pieces of legislation to consider. A specialist advisor can help negotiate even the most complicated of rentals, and focus

on getting the maximum income with the minimum risk. Zoë Rose, of property specialists Rose & Partners, has over 25 years' experience, and was formerly head of lettings for both Hamptons and Strutt & Parker. As part of a boutique agency, she's able to take a tailored, hands-on approach to make sure you're getting the best possible deal.

www.roseandpartners.co.uk

